

LARGE EXCAVATOR



SY500H

STANDARD FEATURES

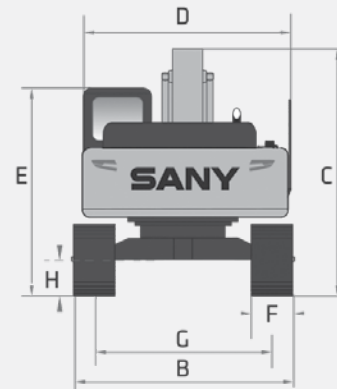
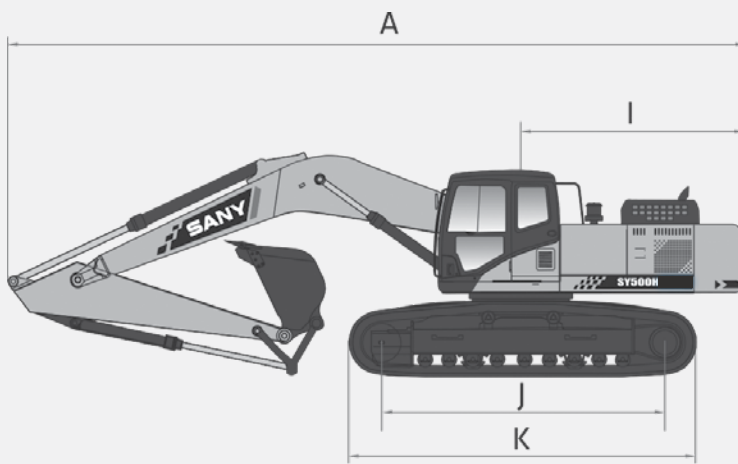
- ➔ Removable counterweight
- ➔ 1-way and 2-way primary auxiliary and 2-way secondary auxiliary circuits
- ➔ Quick coupler plumbed to end of stick
- ➔ Heated air ride seat
- ➔ Rear view cameras
- ➔ Powerful Cummins Engine

400 hp
Gross Power

25' 3"
Dig Depth

120,152 lbs
Operating Weight

61,822 lbs
Bucket Breakout



TECHNICAL SPECIFICATIONS

TECHNICAL SPECIFICATIONS

| | | |
|---------------------------------|---------------------------------------|-----------------|
| Operating Weight | 120,152 lbs | 54 500 kg |
| Ground Pressure | 8.6 psi | 59.0 kPa |
| Engine | Cummins QSG12 Stage V / Tier4F | |
| Displacement | 720.1 in ³ | 11.8 L |
| Gross Power | 400 HP | 298 kW |
| Hydraulics | Positive Flow Control w/Pilot Control | |
| Main Hydraulic Pump | Axial Piston - Variable Displacement | |
| Operating Flow (maximum) | 190.2 gal/min | 720.0 L/min |
| Operating Pressure (maximum) | 4,975 psi | 34.3 MPa |
| Power Boost Pressure (maximum) | 5,410 psi | 37.3 MPa |
| Travel Motor | Axial Piston with Park Brake | |
| Travel Pressure (maximum) | 4,975 psi | 34.3 MPa |
| Travel Speeds (maximum) | 2.1 / 3.2 mph | 3.4 / 5.2 km/hr |
| Travel Effort (maximum) | 76,101 lbf | 339.0 kN |
| Grade Capability (maximum) | 35° | |
| Swing Motor | Axial Piston with Swing Brake | |
| Swing Pressure (maximum) | 3,989 psi | 27.5 MPa |
| Swing Speed (maximum) | 8.0 RPM | |
| Undercarriage (standard) | Steel Track | |
| Track Shoe Width (standard) | 35" | 900 mm |
| Track Rollers (per side) | 9 | |
| Carrier Rollers (per side) | 2 | |

DIMENSIONS

DIMENSIONS

| | | |
|-------------------------------|---------|-----------|
| Boom Length | 23' | 7 000 mm |
| Stick (Arm) Length | 11' | 3 350 mm |
| A Transport Length | 39' 11" | 12 194 mm |
| B Transport Width | 11' 11" | 3 640 mm |
| C Transport Height | 12' 8" | 3 874 mm |
| D Upper Structure Width | 10' 10" | 3 292 mm |
| E Cab Height | 11' 3" | 3 423 mm |
| F Track Width (standard shoe) | 35" | 900 mm |
| G Track Gauge | 9' | 2 740 mm |
| H Ground Clearance | 22' | 560 mm |
| I Tail Swing Radius | 12' 8" | 3 850 mm |
| J Track Length on Ground | 14' 6" | 4 412 mm |
| K Track Length | 17' 11" | 5 459 mm |

SERVICE REFILL CAPACITIES

| | | |
|-------------------------|-----------|---------|
| Fuel Tank Capacity | 179.6 gal | 680.0 L |
| DEF Tank Capacity | 15.0 gal | 56.6 L |
| Hydraulic Tank Capacity | 126.8 gal | 480.0 L |
| Engine Oil Capacity | 8.7 gal | 33.0 L |
| Cooling System Capacity | 13.2 gal | 50.0 L |

*Based on theoretical calculation at max flow with no load. Subject to alterations. In the interest of continual equipment development

SANY America Inc. reserves the right to change these specifications at any time without prior notification. ©2023 SANY America Inc. HEXPS23SY500H001



STANDARD AND OPTIONAL EQUIPMENT

s = standard / o = optional

| SY500H | ENGINE |
|------------------|---|
| s | 11.8 l Cummins |
| s | Auto-idle |
| s | Dual-element dry air filter |
| s | Automatic belt-tension device |
| s | Batteries 24V (2 - 12V) |
| s | Coolant Expansion tank |
| s | Electronic engine control |
| s | Enclosed fan guard |
| s | Engine coolant to -37 deg. C (-34 deg. F) |
| s | Fuel filter with water separator |
| s | Full-flow oil filter |
| s | Turbocharger with charge air cooler |
| s | High flow hydraulically powered cooling fan |
| s | 500-hour engine-oil-change interval |
| s | 70% (35 deg.) off-level capability |
| s | Engine air precleaner |
| s | Severe-duty fuel filter |
| HYDRAULIC SYSTEM | |
| s | Spring-applied, hydraulically released automatic swing brake |
| s | Auxiliary hydraulic-flow adjustments through monitor |
| s | Lift power boost on joystick |
| s | Control pattern change valve |
| s | Auxiliary hydraulics with 1 and 2-way combination piping for high flow |
| s | Auxiliary hydraulics with 2- way rotation piping and controls |
| s | Auxiliary pilot and electric controls |
| s | Quick coupler plumbing and control |
| UNDERCARRIAGE | |
| s | Planetary drive with axial piston motors |
| s | Propel motor shields |
| s | Spring-applied, hydraulically released automatic propel brake |
| s | Track guides, front idler and 2 additional per side |
| s | 2-speed travel selection |
| s | Upper carrier rollers (2) |
| s | Sealed and lubricated track chain |
| s | Triple semi-grouser shoes, 900 mm (36") |
| s | Undercarriage frame opening guard |
| BOOM & STICK | |
| s | Boom 7 m (23') |
| o | Stick, 3.3 m (11') |
| UPPERSTRUCTURE | |
| s | Right-hand, left-hand, and counterweight mirrors |
| s | Vandal lock with ignition key: Cab door /Service door/ Toolbox/Cab Filter |
| s | Debris screen in side panel |
| s | Remote-mounted engine oil and fuel filters |
| s | Heavy duty triangle channel frame guard |
| s | Hydraulic removable counterweight 9.7 kg (21,380 lbs) |

In the interest of continual equipment development, SANY America Inc. reserves the right to change these specifications at any time without prior notification.
 ©2023 SANY America Inc. HEXPS23SY500H001



*Warranty applies to 2023 Excavator and Wheel Loader models only



STANDARD AND OPTIONAL EQUIPMENT

s = standard / o = optional

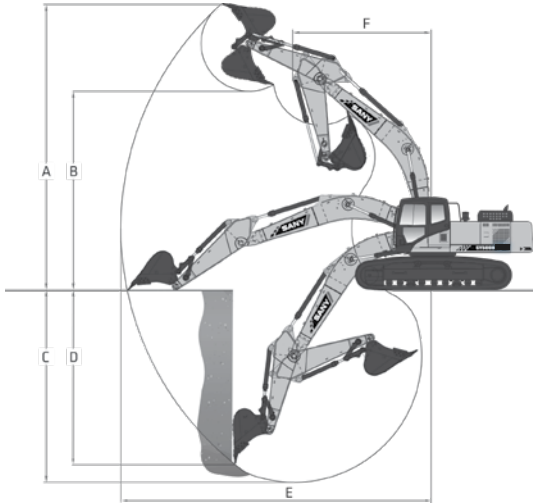
| SY500H ATTACHMENTS CONTINUED | |
|------------------------------|---|
| s | Convenient grease points |
| o | Centralized lubrication system |
| s | Dirt seals on all bucket pins |
| s | Oil-impregnated bushings |
| s | Reinforced resin thrust plates |
| o | Quick coupler |
| o | Buckets: Heavy duty / Heavy-duty high capacity / Side cutter and teeth |
| OPERATOR'S STATION | |
| s | Adjustable independent-control positions (levers-to-seat, seat-to-pedals) |
| s | AM/FM radio with USB charging and Bluetooth® connectivity |
| s | Auto climate control/air conditioner/heater/pressurizer |
| s | Built-in Operator's Manual storage compartment and manual |
| s | 12 and 24V outlets 60 watt 5 amp |
| s | Deluxe heated air suspension cloth seat with adjustable armrests |
| s | Heavy duty rubber floor mat |
| s | Front windshield wiper with intermittent speeds |
| s | Illuminated gauge: diesel exhaust fluid, engine coolant, and fuel levels |
| s | Horn, electric |
| s | Hour meter, electric |
| s | Hydraulic shutoff lever, all controls |
| s | Interior light |
| s | Large cup holder |
| s | Digital Power mode selection: 3 power modes- low, standard, and high |
| s | Digital tool selection: bucket, shear, hammer, etc. |
| s | Multifunction color LCD monitor with: Diagnostic capability / Multiple-language / Maintenance tracking / Clock |
| s | System monitoring with alarm features: Auto-idle indicator, engine air cleaner restriction indicator light, engine check, engine coolant temperature indicator light with audible alarm, engine oil pressure indicator light with audible alarm, low-alternator-charge indicator light, low-fuel indicator light, low DEF indication with audible alarm, fault code alert indicator, fuel-rate display, wiper-mode indicator, work-lights-on indicator, and work-mode indicator |
| s | Motion alarm with cancel switch (conforms to SAE J994) |
| s | Power-boost switch on right joystick |
| s | Auxiliary hydraulic control switches in right console lever |
| s | Seat belt, 2", non-retractable |
| s | Transparent overhead hatch |
| s | Heated or cooled food/beverage storage |
| s | Hydraulic oil filter restriction indicator light |
| s | Protection screens for cab front, rear, and side |
| ELECTRICAL | |
| s | 60-amp alternator |
| s | Ground level electrical disconnect (lockout tag out) |
| s | Blade-type multi-fused circuits |
| s | Positive-terminal battery covers |
| s | Rearview camera |
| LIGHTS | |
| s | Work lights: High power LED - 2 mounted on boom, 2 mounted on top of cab, 1 mounted under step on right side of machine |

In the interest of continual equipment development, SANY America Inc. reserves the right to change these specifications at any time without prior notification.
 ©2023 SANY America Inc. HEXPS23SY500H001



PRODUCT SPECIFICATIONS LARGE EXCAVATOR || SY500H

WORKING RANGE



WORKING RANGE

| | | |
|---------------------------------------|---------|-----------|
| Boom Length | 23' | 7 000 mm |
| Stick (Arm) Length | 11' | 3 350 mm |
| A Maximum Digging Height | 35' 10" | 10 929 mm |
| B Maximum Dumping Height | 25' 1" | 7 647 mm |
| C Maximum Digging Depth | 25' 3" | 7 705 mm |
| D Maximum Vertical Wall Digging Depth | 20' 7" | 6 278 mm |
| E Maximum Reach at Ground Level | 39' 5" | 12 035 mm |
| F Minimum Swing Radius | 17' 1" | 5 216 mm |

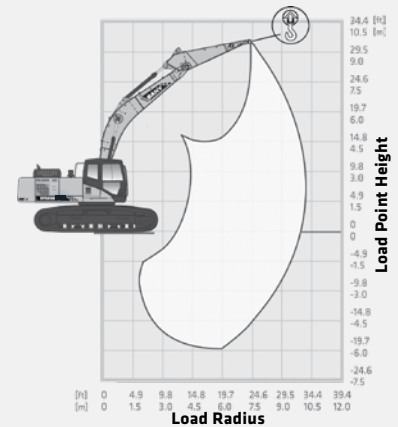
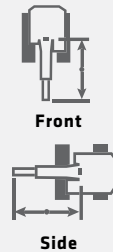
DIGGING PERFORMANCE

| | | |
|---------------------------------|------------|----------|
| Boom Length | 23' | 7 000 mm |
| Stick (Arm) Length | 11' | 3 350 mm |
| Bucket Breakout Force (ISO) | 61,822 lbf | 275.0 kN |
| Stick (Arm) Digging Force (ISO) | 45,535 lbf | 207.0 kN |

LIFTING PERFORMANCE

Standard 23' (7 000 mm) Boom
Standard 11' (3 350 mm) Stick
Standard 35" (900 mm) Track Shoes
No Bucket

Ratings are based on ISO 10567:2007. Lift capacity does not exceed 75% of tipping load with the machine on firm, level ground or 87% of hydraulic lifting capacity.



| LOAD RADIUS | 9.8 FT 3.0 M | | 14.8 FT 4.5 M | | 19.7 FT 6.0 M | | 24.6 FT 7.5 M | | 29.5 FT 9.0 M | |
|--------------------|-------------------------|-------------------------|-------------------------|-------------------------|-------------------------|-------------------------|-------------------------|-------------------------|-------------------------|-------------------------|
| LOAD POINT HEIGHT | | | | | | | | | | |
| 19.7 ft 6.0 m | | | | | | | 24,372 lb* 11055 kg* | 24,372 lb* 11055 kg* | 23,340 lb* 10587 kg* | 23,340 lb* 10587 kg* |
| 14.8 ft 4.5 m | | | 41,099 lb* 18642 kg* | 41,099 lb* 18642 kg* | 31,480 lb* 14279 kg* | 31,480 lb* 14279 kg* | 26,879 lb* 12192 kg* | 26,879 lb* 12192 kg* | 24,443 lb* 11087 kg* | 19,745 lb 8956 kg |
| 9.8 ft 3.0 m | | | 51,963 lb* 23570 kg* | 51,963 lb* 23570 kg* | 36,762 lb* 16675 kg* | 36,762 lb* 16675 kg* | 29,787 lb* 13511 kg* | 24,784 lb 11242 kg | 25,995 lb* 11791 kg* | 19,185 lb 8702 kg |
| 4.9 ft 1.5 m | | | 35,841 lb* 16257 kg* | 35,841 lb* 16257 kg* | 41,063 lb* 18626 kg* | 32,132 lb 14575 kg | 32,419 lb* 14705 kg* | 23,861 lb 10823 kg | 27,498 lb* 12473 kg* | 18,667 lb 8467 kg |
| 0 ft 0 m | | | 44,899 lb* 20366 kg* | 44,899 lb* 20366 kg* | 43,502 lb* 19732 kg* | 31,257 lb 14178 kg | 34,205 lb* 15515 kg* | 23,243 lb 10543 kg | 28,501 lb* 12928 kg* | 18,314 lb 8307 kg |
| -4.9 ft -1.5 m | 33,188 lb* 15054 kg* | 33,188 lb* 15054 kg* | 58,595 lb* 26578 kg* | 47,102 lb 21365 kg | 43,934 lb* 19928 kg* | 30,982 lb 14053 kg | 34,723 lb* 15750 kg* | 22,994 lb 10430 kg | 28,440 lb* 12900 kg* | 18,228 lb 8268 kg |
| -9.8 ft -3.0 m | 55,986 lb* 25395 kg* | 55,986 lb* 25395 kg* | 55,113 lb* 24999 kg* | 55,113 lb* 24999 kg* | 42,243 lb* 19161 kg* | 31,191 lb 14148 kg | 33,416 lb* 15157 kg* | 23,144 lb 10498 kg | | |
| -14.8 ft -4.5 m | 64,589 lb* 29297 kg* | 64,589 lb* 29297 kg* | 48,511 lb* 22004 kg* | 48,511 lb* 22004 kg* | 37,547 lb* 17031 kg* | 31,921 lb 14479 kg | 28,206 lb* 12794 kg* | 23,931 lb 10855 kg | | |

* Indicates load limited by hydraulic lifting capacity.

