

EXCAVATOR

SY80U

STANDARD FEATURES

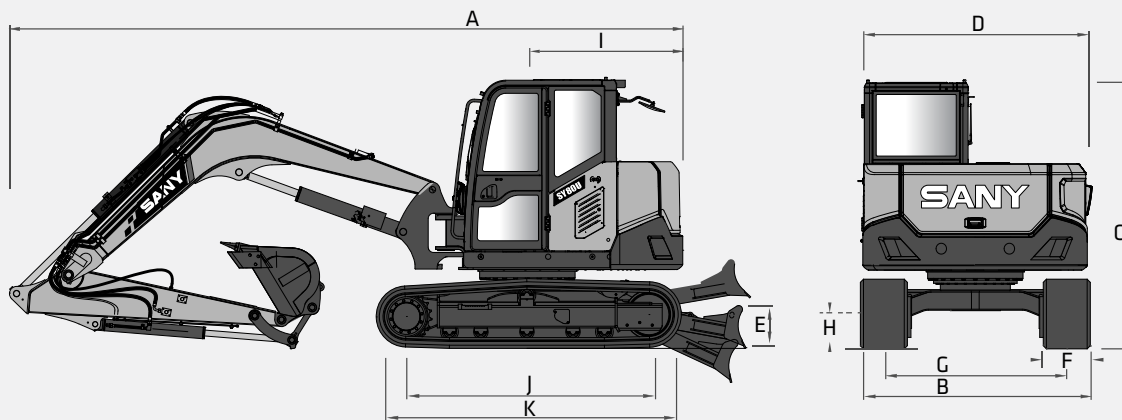
- ➔ Swing boom functionality
- ➔ Reduced tail swing
- ➔ 1-way and 2-way primary and 2-way secondary auxiliary circuits
- ➔ Quick coupler plumbing to end of stick
- ➔ Powerful Yanmar Engine

66.4 hp
Net Power

14' 11"
Dig Depth

19,401 lbs
Operating Weight

16,343 lbf
Bucket Breakout



TECHNICAL SPECIFICATIONS

TECHNICAL SPECIFICATIONS

Operating Weight	19,401 lbs	8 800 kg
Ground Pressure	5.5 psi	37.9 kPa
Engine	Yanmar 4TNV98CT	
Displacement	202.5 in ³	3.32 L
Gross Power	72 hp	53.7 kW
Net Power	66.4 hp	49.5 kW
Hydraulics	Load Sensing with Pilot Controls	
Main Hydraulic Pump	Axial Piston - Variable Displacement	
Operating Flow (maximum)	51.0 gal/min	193 l/min
Operating Pressure (maximum)	3,814 psi	26.3 MPa
Primary Auxiliary Flow (maximum)*	26.4 gal/min	100 l/min
Primary Auxiliary Pressure (maximum)	3,626 psi	25 MPa
Secondary Auxiliary Flow (maximum)*	18.5 gal/min	70 l/min
Secondary Auxiliary Pressure (maximum)	3,626 psi	25 MPa
Travel Motor	Axial Piston with Park Brake	
Travel Pressure (maximum)	3,814 psi	26.3 MPa
Travel Speeds (maximum)	1.6/2.8 mph	2.6/4.5 kph
Travel Effort (maximum)	15,736 lbf	70 kN
Grade Capability (maximum)	35°	
Swing Motor	Axial Piston with Gear Reduction	
Swing Speed (maximum)	11 rpm	
Undercarriage (standard)	Belted Rubber Track	
Track Shoe Width (standard)	18"	450 mm
Track Rollers (per side)	5	
Carrier Rollers (per side)	1	

DIMENSIONS

DIMENSIONS

Boom Length	11' 7"	3 520 mm
Stick Length	6' 9"	2 051 mm
A Transport Length	23'	7 010 mm
B Transport Width	7' 3"	2 200 mm
C Transport Height	8' 5"	2 550 mm
D Upper Structure Width	7' 3"	2 200 mm
E Blade Height	16"	410 mm
F Track Width	18"	450 mm
G Track Gauge	5' 9"	1 750 mm
H Ground Clearance	14"	365 mm
I Tail Swing Radius	4' 10"	1 480 mm
J Track Length on Ground	7' 7"	2 315 mm
K Track Length	9' 7"	2 915 mm

SERVICE REFILL CAPACITIES

Fuel Tank Capacity	26.4 gal	99.9 L
Hydraulic Tank Capacity	31.7 gal	119.9 L
Engine Oil Capacity	2.7 gal	10.2 L
Cooling System Capacity	3.1 gal	11.7 L



STANDARD AND OPTIONAL EQUIPMENT

s = standard / o = optional

sSY80U	ENGINE
s	Yanmar 4TNNV98CT
s	Tier 4F / EU Stage V Ready
s	Auto-idle
s	Dual-element dry air filter
s	Engine air precleaner
s	Coolant Expansion tank
s	Electronic engine control
s	Fan guard
s	Engine coolant to -37 deg. C (-34 deg. F)
s	Full-flow oil filter
s	Turbocharger
s	High flow cooling fan
s	500-hour engine-oil-change interval
s	No scheduled DPF maintenance for 6000 hours
s	Fuel filter and water separator
HYDRAULIC SYSTEM	
s	Spring-applied, hydraulically released automatic swing brake
s	Load sensing hydraulic system
s	Control pattern change valve
s	Primary auxiliary hydraulic circuit with 1 and 2-way combination piping
s	Secondary auxiliary hydraulics circuit
s	Auxiliary hydraulic-flow adjustments through monitor
s	Adjustable auxiliary pressure relief
s	Quick coupler ready
UNDERCARRIAGE	
s	Planetary drive with axial piston motors
s	Propel motor shields
s	Spring-applied, hydraulically released automatic propel brake
s	Track guides, front idler and 2 per side
s	2-speed travel selection through display and on dozer lever
s	5 lower track rollers each side
s	1 upper carrier roller each side
s	Dozer blade with cylinder guarding
s	Tie downs on track frame and dozer blade
s	450mm (18") wide rubber tracks
s	Undercarriage frame opening guard
UPPERSTRUCTURE	
s	Right-hand, left-hand, and counterweight mirrors
s	Lockable cab, hood, and service doors
s	Debris screen in side panel
s	Remote-mounted engine oil and fuel filters
s	Daily fluid level inspection visible from ground
s	Rear reflectors
ATTACHMENTS	
s	Convenient grease points
s	Dirt seals on all bucket pins



STANDARD AND OPTIONAL EQUIPMENT

s = standard / o = optional

SY80U	ATTACHMENTS
s	Thumb bracket
s	Oil-impregnated bushings
s	Reinforced thrust plates
s	Quick coupler plumbing to end of the stick
OPERATOR'S STATION	
s	Hydraulic pilot controls for boom, stick, swing, and travel operations
s	Proportional auxiliary switches on joystick
s	Travel levers with foot pedals
s	AM/FM radio with bluetooth and USB connection port
s	Cell phone tray
s	Weight adjustable suspension cloth seat with fore/aft adjustment and adjustable armrests
s	2" seat mounted lap belt
s	Emergency stop switch
s	Sliding front window
s	Removable lower front window
s	Window breaker
s	ECO mode switch
s	8 tool selection modes
s	Fully adjustable auxiliary flow circuits and pressure from display
s	Multifunction color LCD monitor with: Diagnostic capability / Multiple-language
s	System monitoring features: Auto-idle indicator, 2-speed indicator, work-mode indicator, preheat icon, time and date, battery charge icon, throttle position, engine oil pressure alarm, DPF regeneration inhibit indicator, fuel level gauge, maintenance needed icon, failure code, standard/eco work mode icon, engine coolant temperature, coolant temp alarm, severe failure alarm, work tool mode icon, operating hours
s	High performance heating, ventilation, and air conditioning system
s	Operation and maintenance manual storage
s	Heavy duty removeable rubber floor mat
s	Front windshield wiper with high and low speed
s	Horn, electric
s	Hour meter, electric
s	Hydraulic shutoff lever, all controls
s	Interior light
s	Cup holder
s	Travel alarm with cancel switch
s	Transparent overhead hatch with retractable sun shade
ELECTRICAL	
s	12V electrical system
s	Maintenance free battery
s	Ground level battery disconnect
s	Easy access fuse panel
s	Terminal battery covers
s	80-amp alternator
s	12V power outlet
LIGHTS	
s	Work lights: 2 mounted on top of cab, 1 mounted on boom, magnetic beacon



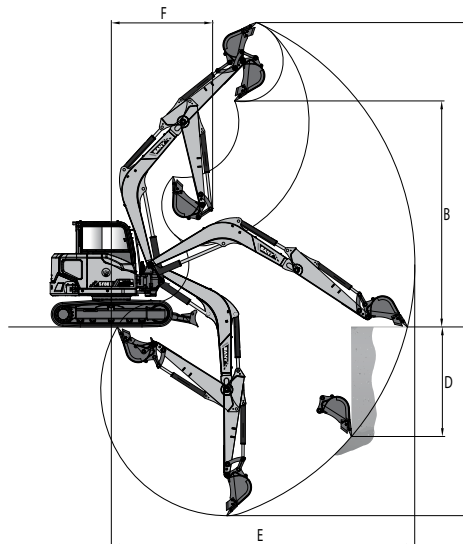
*Warranty applies to 2023 Excavator and Wheel Loader models only.



In the interest of continual equipment development, SANY America Inc. reserves the right to change these specifications at any time without prior notification. ©2023 SANY America Inc. HEXP523SY80U001

PRODUCT SPECIFICATIONS EXCAVATOR III SY80U

WORKING RANGE



WORKING RANGE

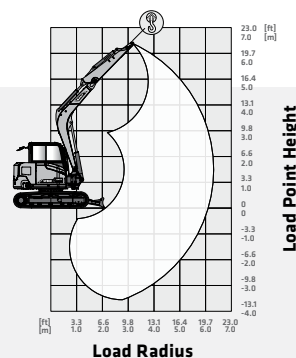
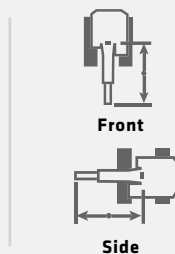
Boom Length	11' 7"	3 520 mm
Stick Length	6' 9"	2 051 mm
A Maximum Digging Height	24'	7 315 mm
B Maximum Dumping Height	17' 10"	5 430 mm
C Maximum Digging Depth	14' 10.5"	4 534 mm
D Maximum Vertical Wall Digging Depth	8' 2"	2 490 mm
E Maximum Reach at Ground Level	23' 4"	7 115 mm
F Minimum Swing Radius	8'	2 435 mm

DIGGING PERFORMANCE

Boom Length	11' 7"	3 520 mm
Stick Length	6' 9"	2 051 mm
Bucket Breakout Force (ISO)	16,343 lbf	72.7 kN
Stick Digging Force (ISO)	9,105 lbf	40.5 kN

Standard 11' 7" (3 520 mm) Boom
 Standard 6' 9" (2 051 mm) Stick
 Standard 18" (450 mm) Track Shoes
 No Bucket

Ratings are based on ISO 10567:2007. Lift capacity does not exceed 75% of tipping load with the machine on firm, level ground or 87% of hydraulic lifting capacity.



LIFTING PERFORMANCE

BLADE DOWN

BLADE UP

LOAD RADIUS	6.6 ft 2.0 m		9.8 ft 3.0 m		13.1 ft 4.0 m		16.4 ft 5.0 m		MAX REACH	
	LOAD POINT HEIGHT									
16.4 ft 5.0 m					4,321 lb* 1 960 kg*	4,321 lb* 1 960 kg*	3,968 lb* 1 800 kg*	2,950 lb 1 338 kg	3,770 lb* 1 710 kg*	2,921 lb 1 325 kg
13.1 ft 4.0 m					4,586 lb* 2 080 kg*	4,586 lb* 2 080 kg*	4,597 lb* 2 085 kg*	2,965 lb 1 345 kg	2,701 lb* 1 225 kg*	2,326 lb 1 055 kg
9.8 ft 3.0 m			6,834 lb* 3 100 kg*	6,834 lb* 3 100 kg*	5,600 lb* 2 540 kg*	4,134 lb 1 875 kg	5,016 lb* 2 275 kg*	2,899 lb 1 315 kg	3,494 lb* 1 585 kg*	2,050 lb 930 kg
6.6 ft 2.0 m			10,461 lb* 4 745 kg*	5,897 lb 2 675 kg	7,011 lb* 3 180 kg*	3,880 lb 1 760 kg	5,666 lb* 2 570 kg*	2,778 lb 1 260 kg	3,594 lb* 1 630 kg*	1,907 lb 865 kg
3.3 ft 1.0 m			9,535 lb* 4 325 kg*	5,401 lb 2 450 kg	8,256 lb* 3 745 kg*	3,638 lb 1 650 kg	6,272 lb* 2 845 kg*	2,657 lb 1 205 kg	3,858 lb* 1 750 kg*	1,885 lb 855 kg
0.0 ft 0.0 m			10,692 lb* 4 850 kg*	5,269 lb 2 390 kg	8,863 lb* 4 020 kg*	3,505 lb 1 590 kg	6,603 lb* 2 995 kg*	2,579 lb 1 170 kg	4,332 lb* 1 965 kg*	1,951 lb 885 kg
-3.3 ft -1.0 m	8,477 lb* 3 845 kg*	8,477 lb* 3 845 kg*	12,500 lb* 5 670 kg*	5,203 lb 2 360 kg	8,708 lb* 3 950 kg*	3,417 lb 1 550 kg	6,471 lb* 2 935 kg*	2,513 lb 1 140 kg	5,225 lb* 2 370 kg*	2,194 lb 995 kg
-6.6 ft -2.0 m	13,492 lb* 6 120 kg*	10,648 lb 4 830 kg	10,836 lb* 4 915 kg*	5,236 lb 2 375 kg	7,694 lb* 3 490 kg*	3,417 lb 1 550 kg	5,390 lb* 2 445 kg*	2,535 lb 1 150 kg	5,291 lb* 2 400 kg*	2,612 lb 1 185 kg
-9.8 ft -3.0 m	11,144 lb* 5 055 kg*	11,144 lb* 5 055 kg*	7,463 lb* 3 385 kg*	5,401 lb 2 450 kg					5,049 lb* 2 290 kg*	3,825 lb 1 735 kg
15.4 ft 5.0 m					4,321 lb* 1 960 kg*	4,321 lb* 1 960 kg*	3,968 lb* 1 800 kg*	2,950 lb 1 338 kg	3,770 lb 1 710 kg	2,921 lb 1 325 kg
13.1 ft 4.0 m					4,586 lb* 2 080 kg*	4,586 lb* 2 080 kg*	4,597 lb* 2 085 kg*	2,965 lb 1 345 kg	2,701 lb* 1 225 kg*	2,326 lb 1 055 kg
9.8 ft 3.0 m			6,834 lb* 3 100 kg*	6,834 lb* 3 100 kg*	5,600 lb* 2 540 kg*	4,134 lb 1 875 kg	3,902 lb 1 770 kg	2,899 lb 1 315 kg	2,833 lb* 1 285 kg	2,050 lb 930 kg
6.6 ft 2.0 m			8,488 lb 3 850 kg	5,897 lb 2 675 kg	5,346 lb 2 425 kg	3,880 lb 1 760 kg	3,781 lb 1 715 kg	2,778 lb 1 260 kg	2,612 lb 1 185 kg	1,907 lb 865 kg
3.3 ft 1.0 m			7,926 lb 3 595 kg	5,401 lb 2 450 kg	5,082 lb 2 305 kg	3,638 lb 1 650 kg	3,649 lb 1 655 kg	2,657 lb 1 205 kg	2,579 lb 1 170 kg	1,885 lb 855 kg
0.0 ft 0.0 m			7,771 lb 3 525 kg	5,269 lb 2 390 kg	4,938 lb 2 240 kg	3,505 lb 1 590 kg	3,560 lb 1 615 kg	2,579 lb 1 170 kg	2,679 lb 1 215 kg	1,951 lb 885 kg
-3.3 ft -1.0 m	8,477 lb* 3 845 kg*	8,477 lb* 3 845 kg*	7,694 lb 3 490 kg	5,203 lb 2 360 kg	4,839 lb 2 195 kg	3,417 lb 1 550 kg	3,494 lb 1 585 kg	2,513 lb 1 140 kg	2,998 lb 1 360 kg	2,194 lb 995 kg
-6.6 ft -2.0 m	13,492 lb* 6 120 kg*	10,648 lb 4 830 kg	7,738 lb 3 510 kg	5,236 lb 2 375 kg	4,839 lb 2 195 kg	3,417 lb 1 550 kg	3,527 lb 1 600 kg	2,535 lb 1 150 kg	3,594 lb 1 630 kg	2,612 lb 1 185 kg
-9.8 ft -3.0 m	11,144 lb* 5 055 kg*	11,144 lb* 5 055 kg*	7,463 lb* 3 385 kg*	5,401 lb 2 450 kg					5,049 lb* 2 290 kg*	3,825 lb 1 735 kg

* Indicates load limited by hydraulic lifting capacity.
 In the interest of continual equipment development, SANY America Inc. reserves the right to change these specifications at any time without prior notification.
 ©2023 SANY America Inc. HEXPS23SY80U001